



This month's newsletter:

- **Celebrating Earth Day- Fun Facts and Activities for April 22nd**
- **KGA Update: ArcGIS Competition Extended to May 1st!**
- **Careers in Geography: GIS Analyst Spotlight**
- **National Environmental Education Week**
- **Kentucky Museum's Virtual Exhibits and 360 Tours**

Celebrating Earth Day!

Earth Day is a celebration of the beginning of the large environmental movement, calling for environmental awareness and protection. We've gathered some interactive activities for you and your classroom.

52 years celebrating Earth Day: EPA Education Resources

The EPA was created with the mission to protect the environment, and they have provided a list of activities to promote environmental education with activities for K-12 classrooms. Their webpage [Celebrating Earth Day's 50th Anniversary](https://www.epa.gov/sites/production/files/2020-04/documents/earthdayclassroomresources_s.pdf) has many activity books, lesson plans, and website resources to spread environmental awareness in your classroom. Find these resources with this link:

https://www.epa.gov/sites/production/files/2020-04/documents/earthdayclassroomresources_s.pdf

Earth Day Fun Facts from the U.S. Census

The U.S. Census is also dedicated to celebrating Earth Day, and has shared a fact sheet with data from the Census Bureau about statistics in renewable energy. These activities are meant for all grade levels, and available to at-home learners. Find the Earth Day Census Fact Sheet and Teaching Guide with this link! :

<https://www.census.gov/programs-surveys/sis/resources/fun-facts/earth->

day.html?utm_campaign=20210401c20s1ccedunl&utm_content=&utm_medium=email&utm_source=govdelivery

Earth Day with NatGeo Kids!

The National Geographic Kids Club has a great web page in honor of Earth Day with information about environmental issues like biodiversity, waste reduction, and climate change. Find a topic to share with your classroom through this link!

<https://www.natgeokids.com/za/kids-club/cool-kids/general-kids-club/earth-day/>

KGA Update: ArcGIS Competition



The KGA has some important and exciting news regarding the ArcGIS National Competition 2021. **The KGA will be extending the deadline for submissions to May 1, 2021.** If you missed it, the ArcGIS

Competition is a national competition for Middle (4-8) and High (9-12) School students to create and submit a story map with a unique subject about Kentucky! There is still time for submissions, and story maps are easily made through [Esri](https://www.esri.com). The KGA has a multitude of resources to help students get started with their story maps, and they can enter for the chance to win a \$100 Gift Card and become a National Winner! For more information to get involved, visit the KGA's Competition page here: <https://www.kgalliance.org/2021-arcgis-online-competition-for-us-hsms-students.html>

Careers in Geography

Careers in Geography is a new project of the KGA, where we will share just some of the diverse careers that can be found in the field of Geography. We want to provide as much information as we can, and will be interviewing professionals in the field! For our first career feature, we're exploring a career in GIS or Cartography!

Lillian Scoggins is Mammoth Cave's GIS Specialist, and answered some of our questions about her position! If you'd like to see our full interview with Lillian, check out the [Careers in Geography webpage!](#)

How long have you been interested in Geography and what got you interested?

I started working with the park service after I graduated college. After four seasons I accepted an SCA position at Mammoth Cave National Park. I worked for the Cumberland Piedmont Network (CUPN) GPSing and Mapping features for the park. I worked on mapping the Parks boundary, caves, trails and watershed. Working as an SCA is how I got interested in Geographic Information Systems (GIS) and Global Positioning Systems (GPS). My first degree is actually a BS in Horticulture. I had zero experience with GIS or GPS.

How long have you been doing this job?

I have been working for the National Park Service since 1997 and at Mammoth Cave National Park since 2000. So, 21 years at my current position 24 years with the National Park Service.

What degree do you have that allows you to have this job?

After my internship with CUPN there was a GIS specialist position available at Mammoth Cave. I went back to school to get my Geographic Information Systems program certificate. I was originally hired as a student trainee and worked my way up to my current position as the parks GIS Specialist. Combined with my years of experience with the National Park Service and having a Bachelor of Science degree I was able to get hired as a permanent employee at Mammoth Cave National Park.

What do you like about the industry?

I love working for the National Park Service especially Mammoth Cave National Park. Every day I am a part of a group that is protecting the world's longest cave system and all the above ground features in the park such as plants, animals, reptiles, amphibians, insects and cultural features, etc. I also work with Maintenance and Law Enforcement on various projects. For maintenance I maintain locations for electrical lines, right of ways, fiber optics, sewer lines, hazard trees etc. If we have search and rescues or incidents in the park, I will assist Law Enforcement with maps of that as well.

**JOB DETAILS:
Cartographers & GIS
Analysts**

Collect and interpret geographic data, and create maps with this data.

12,000 Cartographers in the US & numbers are growing

\$65,000 a year average income

4% Growth over next 10 years

Bureau of Labor Statistics (2019)

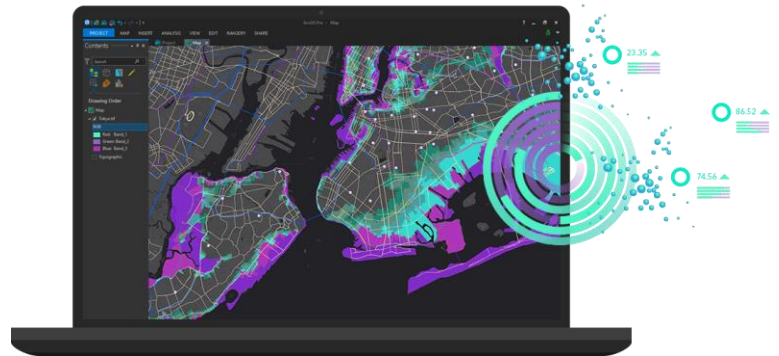


Image from Esri

**National
Environmental Education
Week April 19-23, 2021**

Next week is National Environmental Education week, and the National Environmental Education Foundation is celebrating with an entire week of resources and events to bring to the classroom and enhance environmental education! To find out more, visit this website to take a look at NEEF's Education Resources.

<https://www.neefusa.org/education/eeweek>

Kentucky Museum Virtual Exhibits and Tours

The Kentucky Museum at WKU offers Virtual Exhibits and 360 Tours that can be integrated into your teaching! Learn about unique histories and artifacts through this flexible and engaging resource. Find more information here: <https://kentucky-museum.org/>

